



स्वास्थ्य सेवा परमो धर्मः

# Our Prestigious Projects & Field Experience

Atulit Biswas Swasth Evam Shikshan Samiti — proven delivery in hospital infrastructure: Medical Gas Pipeline Systems (MGPS), fire safety, modular OTs, and PSA oxygen plants. Portfolio focused on government hospitals with rigorous standards, robust documentation, and hands-on commissioning teams.



# MGPS Excellence — Part 1

Government hospital projects delivered with end-to-end services: installation, testing, maintenance, and commissioning. Our teams follow statutory codes and hospital protocols to ensure uninterrupted clinical supply.



## Rajgarh Hospital

Full MGPS installation with color-coded copper piping and zone manifolds. Commissioned with leak and flow verification.



## Banda Hospital

Pipeline routing through sterile corridors; priority outlets for ICU and OT. Routine maintenance handover completed.



## Ichchawar Hospital

Integrated zone isolation valves and manifold redundancy for critical care resilience.



## Govindpura Hospital

Central manifold upgrade and commissioning documentation provided to hospital engineering.



## Seoni Hospital

Supply continuity plan implemented; periodic preventive maintenance schedule established.

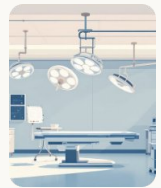


## Manasa Hospital

Completed outlet verification and staff training for emergency shut-off and basic troubleshooting.

# MGPS Excellence — Part 2

Extended MGPS deployments across additional government hospitals — emphasizing standardized materials, traceable QA, and rapid commissioning to meet clinical timelines.



## Mahidpur Hospital

OT and ICU feeds validated under pressure tests; emergency isolation training delivered to staff.



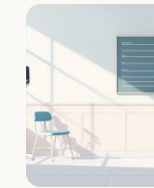
## Shajapur Hospital

Modular OT integration with MGPS outlets and central alarm interlocks (see Specialized Infrastructure).



## Myana Hospital

End-to-end pipeline routing with labeled isolation points to minimize service disruption during maintenance.



## Hoshangabad Hospital

Installed remote monitoring probes for early detection of pressure deviation and leak events.



## Dewas Hospital

Flexible drop-lines to support phased ward refurbishments without supply interruption.



## Sanchi Hospital

Comprehensive documentation and as-built drawings submitted; training for biomedical staff completed.



## J.P. Hospital

PSA oxygen plant co-located with MGPS distribution — detailed in Specialized Infrastructure.



# Fire Fighting & Safety Systems

We design, install, and commission comprehensive fire safety systems tailored to hospital requirements: fire alarms, hydrants, suppression strategies, evacuation planning, and staff protocol training.



## Rajgarh

Hydrants and external hydrant rings installed; alarm integration with central control room.



## Govindpura

Addressable fire alarm network with zone mapping and audible evacuation cues.



## Seoni

Dedicated fire water storage and pump house with automatic start and manual override.



## Manasa

Exit lighting, route planning, and staff evacuation drills coordinated during commissioning.



## Mahidpur

Sprinkler coverage analysis and installation for clinical and support areas.



## Sanchi

Delivered documentation, SOPs, and training for on-site firefighting teams.

# Specialized Infrastructure — Modular OT

Turnkey modular OT solution delivering controlled airflow, integrated MGPS outlets, and rapid on-site assembly. Emphasis on infection control, ergonomic layout, and clinical workflow.



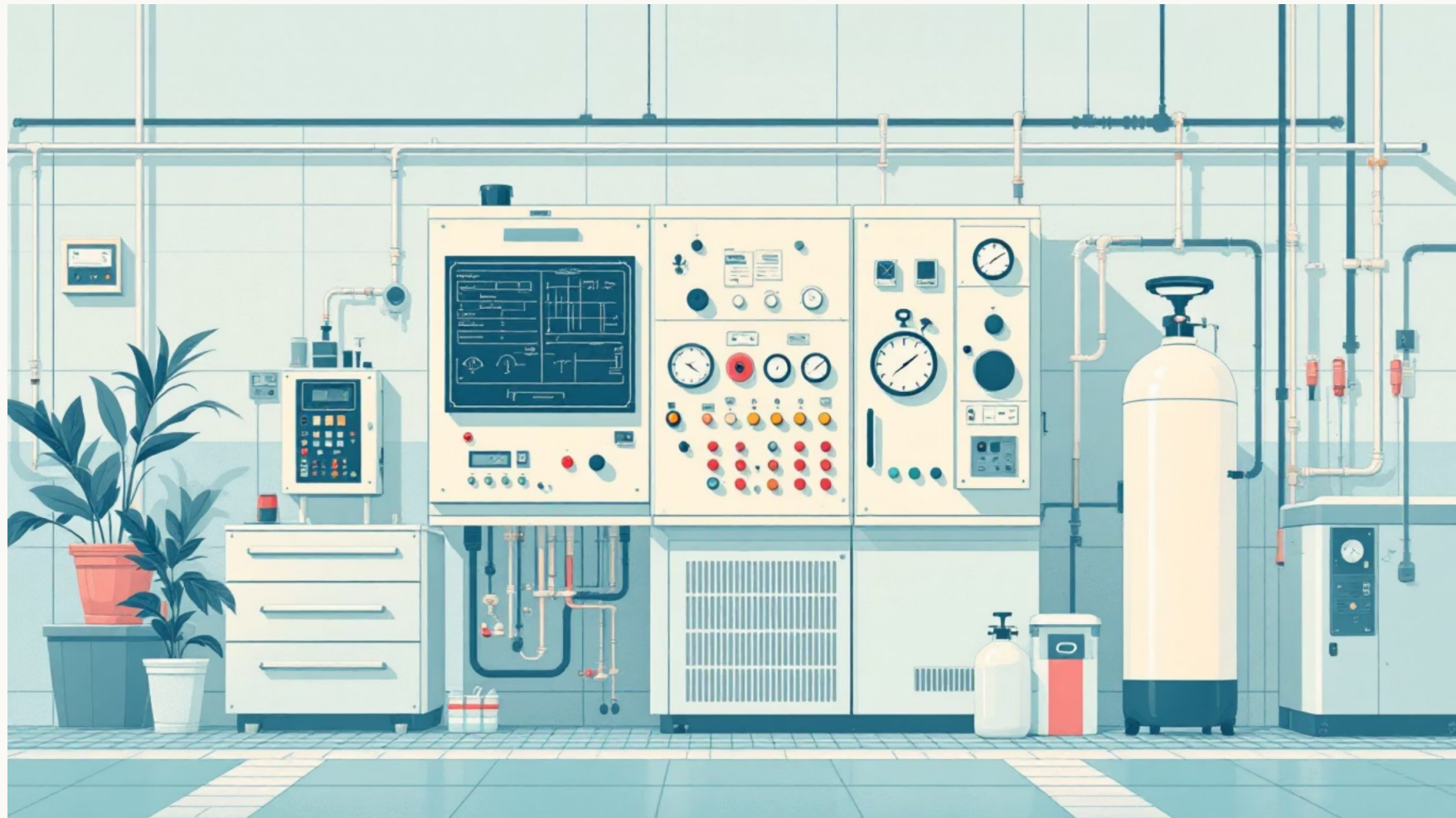
## Shajapur Government Hospital — Modular OT Training

Delivered on-site training for OT staff and biomedical engineers covering system operation, routine checks, sterile workflow, and emergency protocols. Handover included test certificates, airflow validation, and maintenance schedules.

- ❏ Modular OTs enable faster commissioning and reduce disruption to existing surgical services.

# Specialized Infrastructure — PSA Oxygen Plant

Pressure Swing Adsorption (PSA) plants supply medical-grade oxygen directly to hospital MGPS, reducing dependency on cylinder logistics and ensuring continuous supply during surges.



## J.P. Government Hospital

Installed and commissioned PSA oxygen plant sized for hospital bed capacity with redundant compressors, oxygen analyzers, and automatic switchover to cylinder backup. Includes maintenance contract and staff certification for safe operation.

- Capacity aligned to peak clinical demand
- Inline oxygen purity monitoring and alarm integration
- Preventive maintenance & spares stocking plan

# Quality Assurance & Compliance

We adhere to national hospital standards and international best practices for MGPS and fire systems. Each project includes: factory acceptance testing, site commissioning, as-built documentation, and compliance verification.

## Testing & Commissioning

Pressure tests, leak detection, purity checks, and functional alarms validation.

## Documentation

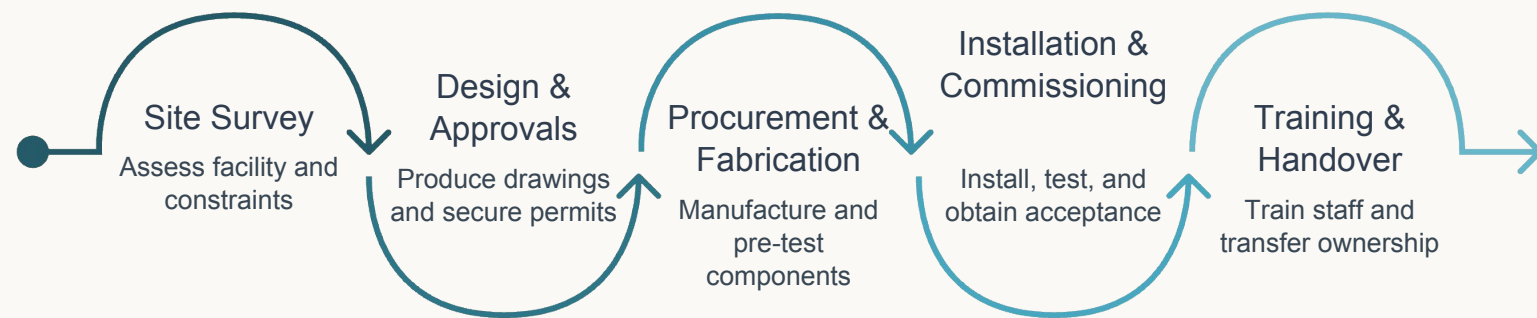
As-built drawings, O&M manuals, and calibration records supplied to facility management.

## Training

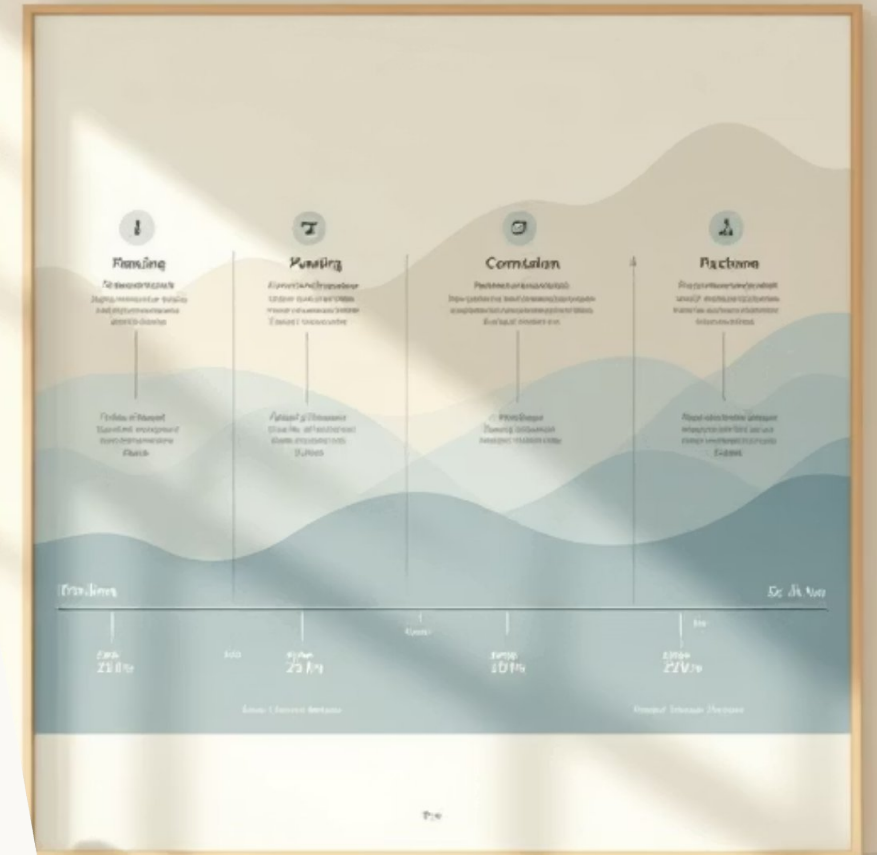
Hands-on sessions for clinical staff and biomedical engineers on operation and emergency response.



# Typical Project Roadmap



Our staged approach reduces risk and keeps hospital operations running: surveys inform design; fabrication and pre-testing shorten site time; commissioning includes joint acceptance and staff training.





# Core Capabilities & Technical Team

Multidisciplinary teams combining mechanical, electrical, and clinical engineering expertise. Capabilities emphasize safety, repeatable processes, and rapid response maintenance.

## Medical Gas pipeline Systems

Design and full lifecycle services for MGPS, manifolds, and outlet systems.

## Fire Safety Systems

Addressable alarms, hydrants, sprinklers, and evacuation planning tailored to hospital layouts.

## Modular OT Delivery

Prefabricated OTs with validated environmental controls and integrated services.

## PSA Oxygen Plants


On-site generation systems with purity monitoring and redundancy planning.



# Conclusion & Next Steps

Dedicated to healthcare safety and technical excellence. We offer turnkey delivery, robust compliance, and ongoing support to protect patients and staff. Suggested next steps:

1. Schedule an on-site survey for scope confirmation
2. Review technical proposal and phased timeline
3. Approve maintenance and training package for sustained operations

 Contact our Project Delivery Lead to arrange a survey and receive a tailored proposal with timelines and cost estimates.

